



Centrifugal horizontal end suction pump

Model : VFE 100-26  
Standard : DIN 24255

Singapore address  
1 Joo Koon Way Singapore 628942

**Project name :**  
**Location :**

**Contractor :**  
**Subject :**



**Manufacturer offer :**

Flow rate obtained (m3/h)	290.00
Calculated Head (mCE)	85.00
Efficiency	0.93
Input power (kW)	80.00
NPSH required (m)	
NPSH Available (mCE)	

**Project requirement :**

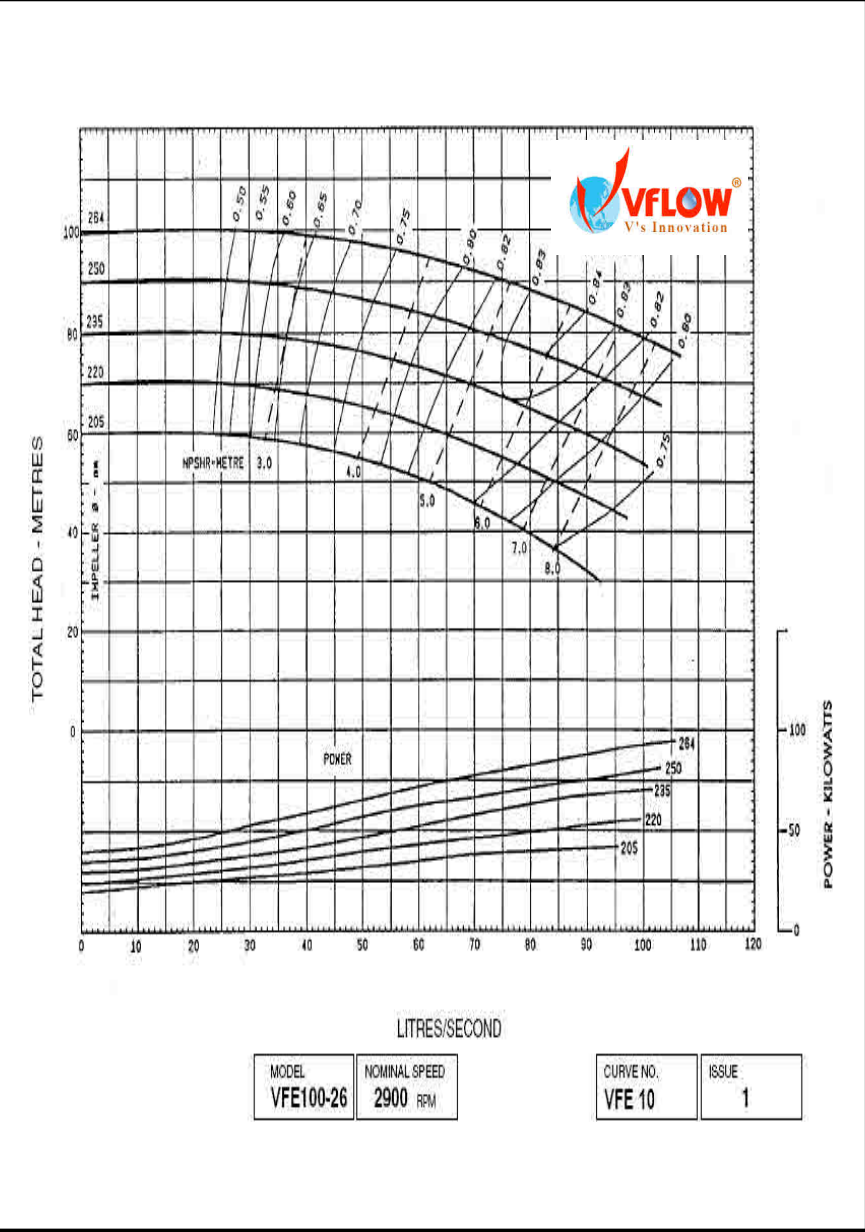
Liquid	Water
Temperature (°C)	30
Flow rate requested (m3/h)	290.00
Requested Head (mCE)	85.00
Operation	On load pump

**Pump materials & Construction**

Assembly	Off-line
Impeller	Bronze
Pump casing	Cast iron
Pump shaft	Stainless steel
Seal	Mechanical seal

**Driven by Diesel Engine for fire pump :**

Manufacturer	QUANCHAI
Original	CHINA
Model	6105
Rate	97KW@ 3000RPM
No of cylinders	04
Type of Starter	Battery 12VDC
Cooling type	Water - Cooled
Engine on baseplate with	Coupling & guard



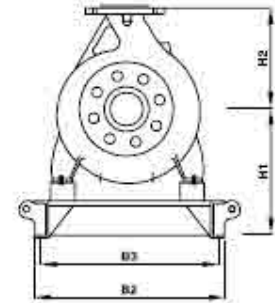
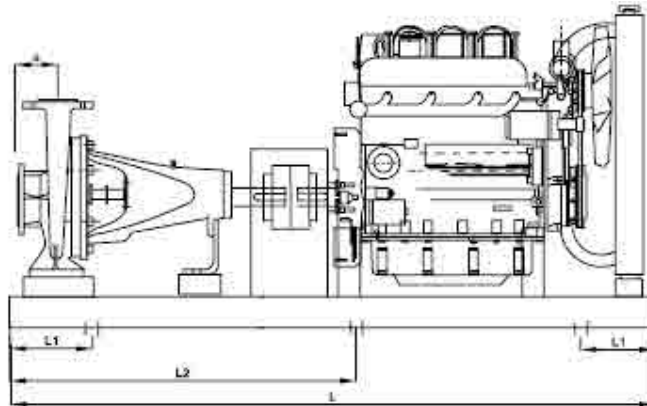
**Hydraulic testing & Temperature**

Maximum working pressure (bar)	10-16
Minimum temperature (°C)	-20
Maximum temperature (°C)	135

Singapore address  
1 Joo Koon Way Singapore 628942

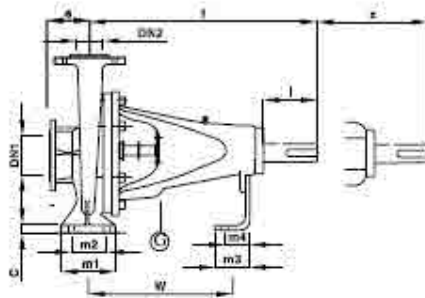
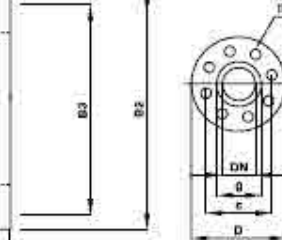
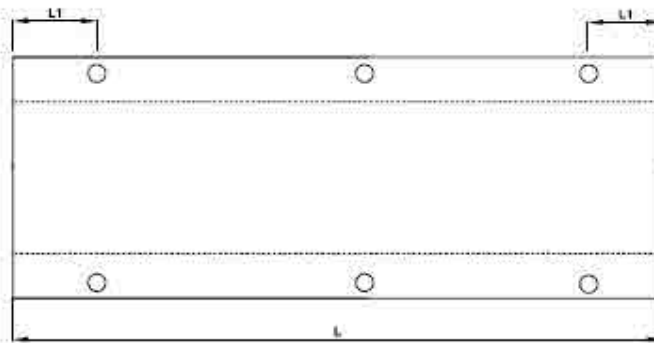
Project name :  
Location :

Contractor :  
Subject :

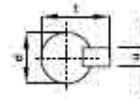


Flanges / Brides  
PN 10 / 16

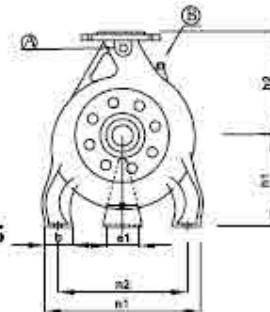
(Suct.-Disch / Asp.-Ref)



Shaft end / bout d arbre  
(DIN 748)



Key / Clavette DIN 6885



Dimensional characteristics :

a (mm)	a1 (mm)	B2 (mm)	B3 (mm)	b (mm)	d (mm)	f (mm)
125	110	750	680	80	32	470
H2 (mm)	W (mm)	H1 (mm)	h1 (mm)	L (mm)	L1 (mm)	L2 (mm)
280	342	375	225	2010	260	1005.0
n1 (mm)	n2 (mm)	m1 (mm)	m2 (mm)	l (mm)	t (mm)	D (asp)
400	315	160	120	80	35	250
c (asp)	g (asp)	Nb. holes (suct)	D (ref)	c (ref)	g (ref)	Nb. holes (disch)
210	184	8x19	220	180	156	8x19

Mass (kg)

Suction - DN / Connection

DN 125

Discharge - DN / Connection

DN 100