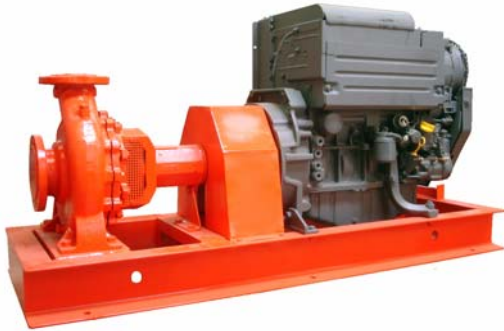


53 Bld. de la République  
Espace lumière – Bat. : 6  
78403 CHATOU CEDEX - FRANCE  
Tél.: (33) 0820 873 624 – Fax : (33) 01.30.09.82.48  
www.salmson.fr – service.conso@salmson.fr

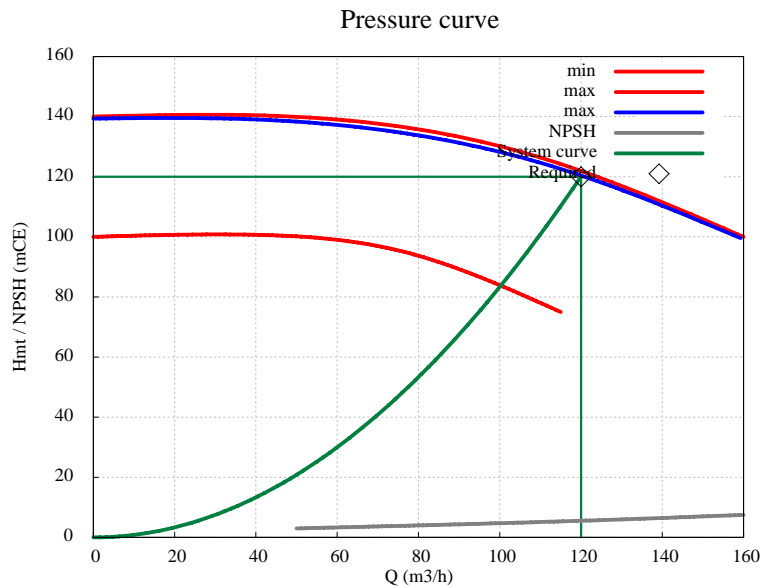
**DIESEL FIRE PUMP**

Customer :  
Job Reference :  
Quotation N° :  
Ed. :  
Item :



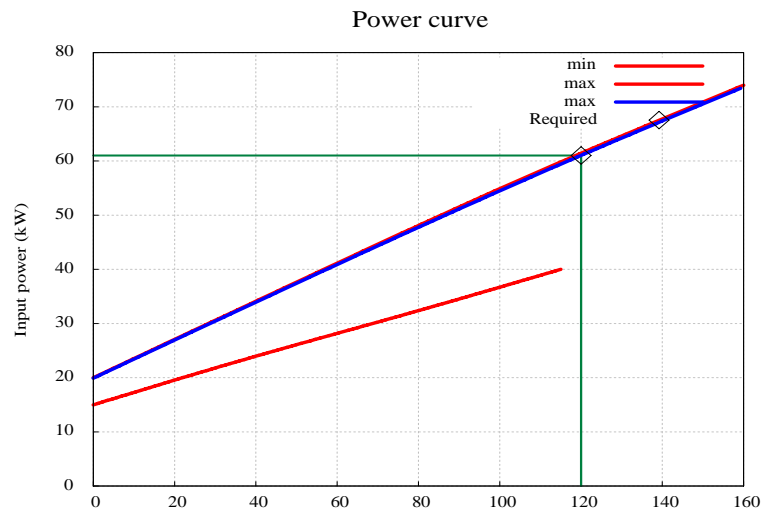
Characteristics requested :

Liquid	water
Temperature (°C)	90
Flow rate requested (m3/h)	120.00
Requested Head (mCE)	120.00
Operation	On load pump



Suggested characteristics :

Flow rate obtained (m3/h)	<b>120.00</b>
Calculated Head (mCE)	<b>120.00</b>
Efficiency	0.64
Input power (kW)	61.023
NPSH required (m)	5.56
NPSH Available (mCE)	



Pump characteristics :

Assembly	Off-line
Impeller	EN-GJL-250 Cast iron
Pump casing	EN-GJL-250 Cast iron
Pump shaft	420 regular / Stainless steel
Casing cover	EN-GJL-250 Cast iron
Mechanical seal	Carbon/Ceramic/EPDM
Spacer	Yes
Plugs	C 22E Steel

Diesel characteristics :

Manufacturer	<b>DEUTZ - GERMANY</b>
Model	<b>F 5L 912</b>
Rated	<b>82 KW</b>
Speed	<b>2800 rpm</b>
Cooling type	<b>Air - cooled</b>
Starter type	<b>Electric start ( Battery)</b>

Operating limits :

Maximum working pressure (bar)	10-16
Minimum temperature (°C)	-20
Maximum temperature (°C)	135



Plate-mounted horizontal pump :

**NOH 65-315-H31/GM**

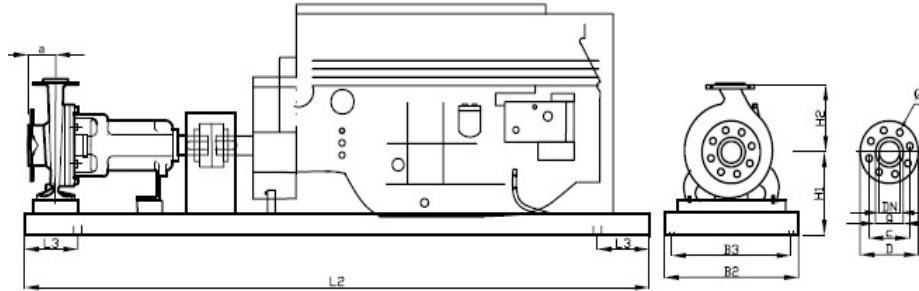
Réf. : 4036804

Standardized horizontal pump mounted on base

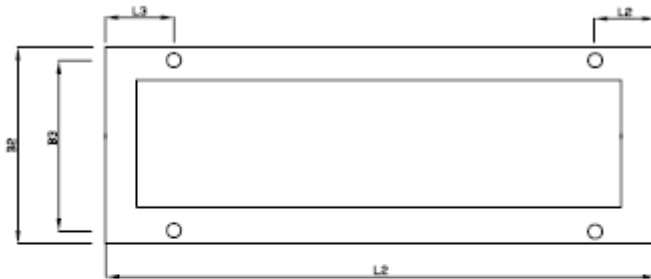
53 Bld. de la République  
Espace lumière – Bat. : 6  
78403 CHATOU CEDEX - FRANCE  
Tél.: (33) 0820 873 624 – Fax : (33) 01.30.09.82.48  
www.salmson.fr – service.conso@salmson.fr

Tél. :  
Fax :  
e-mail :

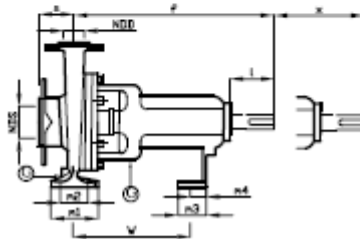
Customer :  
Job Reference :  
Quotation N° :  
Ed. :  
Item :



option:coupling with spacer / Accouplement avec spacer  
x: Clearance for removal of bearing motor /  
Recul pour le démontage de l'ensemble  
palier-fond-roue sans déplacer le moteur



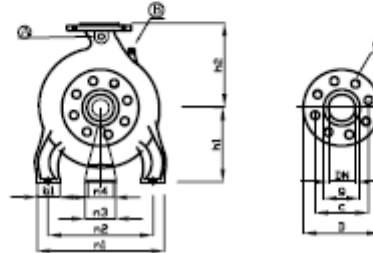
A pressure gauge / Prisc manomètre  
B pump filling / Vidange corps de pompe  
F Pump casing drain / Vidange corops de pompe  
G Leak evacuation / Evacuation des fuites



Shaft end / bout d'arbre  
(DIN 748)



Key / Clavette DIN 6885



Dimensional characteristics :

a (mm)	a1 (mm)	B2 (mm)	B3 (mm)	b1 (mm)	d (mm)	E (mm)	e (mm)	f (mm)	H1 (mm)
125	12	640	565	80	42	140	16	530	356
h2 (mm)	l (mm)	k (mm)	L2 (mm)	L3 (mm)	m1 (mm)	m2 (mm)	m3 (mm)	m4 (mm)	H2 (mm)
280	110	45	1660	260	160	120	60	42	280.0
n1 (mm)	n2 (mm)	n3 (mm)	n4 (mm)	S1 (mm)	s1 (mm)	s2 (mm)	S4 (mm)	u (mm)	h1 (mm)
400	315	160	110	335	16	12	29	0	225
c (asp)	g (asp)	Nb. holes (suct)	D (ref)	c (ref)	g (ref)	Nb. holes (disch)	w (mm)	X (mm)	D (asp)
160	132	8x19	185	145	118	4x19	370	140	200

Mass (kg)  
Mass (kg)

Suction - DN / Connection  
Discharge - DN / Connection

DN 80  
DN 65